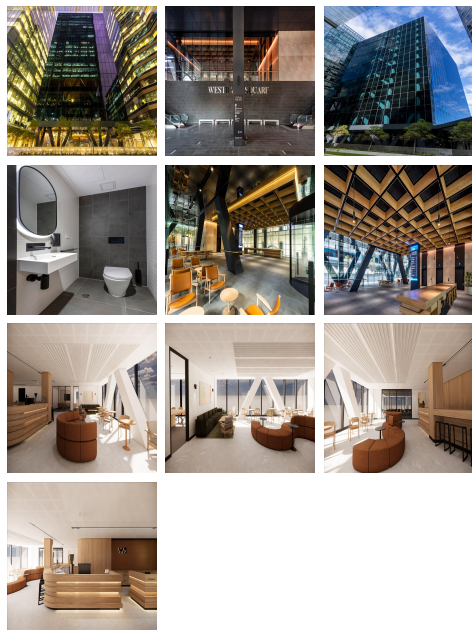
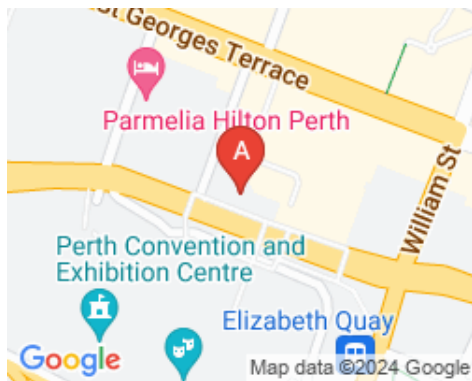


141 St Georges Terrace

Perth 6000



Introducing the epitome of sustainable innovation and architectural marvel in the heart of Perth CBD: Liberty at Westralia Square 2. Prepare to be captivated by Perth's first timber building, meticulously crafted with sustainably sourced Cross-Laminated Timber (CLT), ensuring commitment to environmental stewardship and occupant well-being. Step into a workspace of unparalleled luxury and functionality across 1,773m2 of private offices, state-of-the-art meeting rooms, executive lounges, and collaborative coworking spaces.

Westralia Square 2 stands out as a premier destination for businesses seeking unparalleled office space in the heart of Perth's bustling central business district. Its prime location offers easy accessibility, nestled within close proximity to major transportation hubs and surrounded by a vibrant array of amenities. Boasting state-of-the-art facilities and modern architectural design, Westralia Square 2 provides a dynamic and inspiring environment conducive to productivity and innovation. With flexible floor plans tailored to accommodate diverse business needs, this iconic development offers the perfect blend of functionality and sophistication. Additionally, its commitment to sustainability underscores its appeal, incorporating energy-efficient features and eco-friendly practices. Whether it's the panoramic views of the city skyline, the unmatched convenience of its location, or its dedication to sustainability, Westralia Square 2 sets a new standard for excellence in commercial real estate, attracting discerning tenants looking to elevate their businesses to new heights.

transport links

Underground	N/A
Train Station	Perth
Road Link	N/A
Airport	Perth Airport

Virtual Office

- **Price** : \$175 pcm
- **Min Price** : \$175 pcm
- **Min Term** : 3 mnths
- **Max Term** : 36 mnths