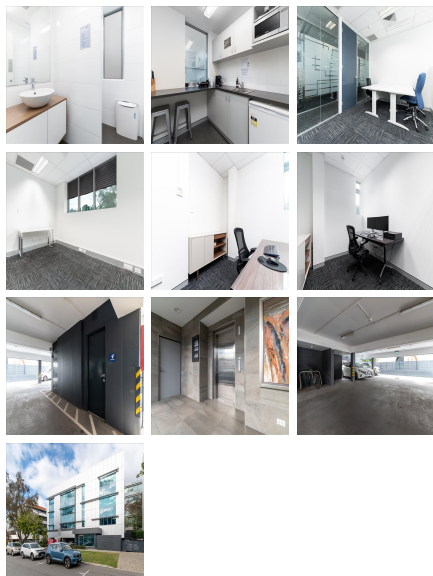


# Serviced Office Australia

## 11 Lucknow Place

Perth 6009



Nothing says “I’ve made it” more than a prestigious business address, and that’s precisely the type of flex space you’re privy to at Lucknow Place. This standalone building situated in West Perth’s buzzing business centre is a worker’s paradise. It’s in proximity to public transport for tenants who work some distance from home, near to the Perth Airport if you travel for work, and a short walk away from a lovely public park, as well as various cafes and restaurants. The smart-casual design is ideal for individuals who want a professional work setting with some cosy elements, such as plush sofas and pretty cushions, as well as lovely pictures hanging from the walls. The roomy, well-lit flexible office space extends a homey and relaxed vibe. Convenient building features that you’ll appreciate include high-speed lifts, undercover parking at an additional cost, and 24/7 access for those early morning starts and late nights at the office.

Located on the corner of Lucknow Place and Prowse Streets, 11 Lucknow Place is a distinctive standalone office building boasting a position in the heart of West Perth’s vibrant business district. The building delivers a professional and secure environment. City West train station is located almost across the road and CAT buses run frequently on Wellington and Colin Streets. It is 5 minutes from both Kings Park and the vibrant Leederville café strip and is directly opposite Totterdell Park. Parking bays are available for lease and there is also ample on street parking for clients and visitors. Our end of trip facilities (showers, bicycle racks and lockers) mean that your staff can cycle or walk to work if so desired. Our offices boast natural light and amazing views from all perimeter offices. Shared use of kitchen facilities and reasonable use of electricity is included in the monthly rent. Unlimited fibre internet access is available if required. Lucknow Place also boasts premium grade modern fit-outs which can include office furniture if required.

### transport links

Underground	N/A
Train Station	Subiaco
Road Link	N/A
Airport	Perth Airport

### Serviced Offices

- **Price :** \$1000 pcm
- **Min Price :** \$1000 pcm
- **Min Size :** 1 wkstns
- **Max Size :** 10 wkstns
- **Total Size :** 10 wkstns
- **Min Term :** 12 mnths
- **Max Term :** 24 mnths