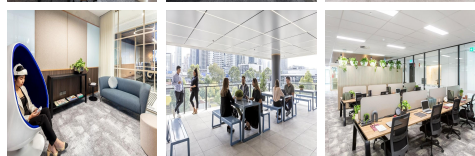
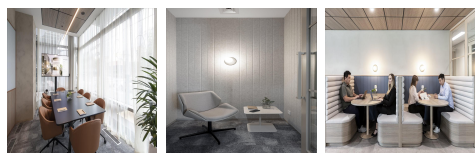
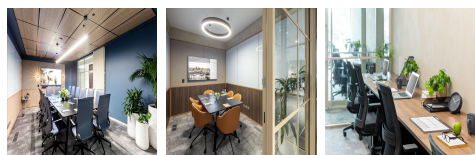
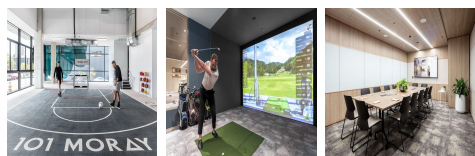
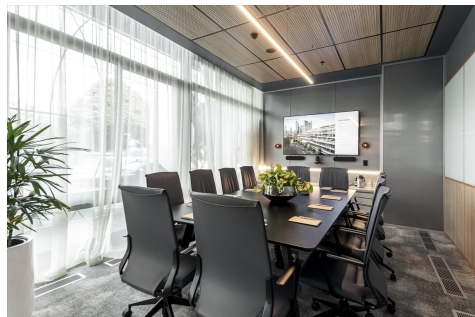


# Serviced Office Australia

## 101 Moray Street

Melbourne 3205



This incredible location offers an indoor sport court, exclusive helicopter flights, luxury chauffeured travel in a fully fitted Mercedes Sprinter, a fully managed gym with Pilates and yoga classes, a golf simulator, event spaces, a cloud platform to keep everyone connected plus many more. This incredible location is close by to major freeway arterials and public transport links. Surrounding the centre is an abundance of cafes and restaurants you will never run out of options for lunch or after-work drinks.

This centre is a collaborative co-working space with multiple flexible membership options to choose from depending on your business size including; open desk, dedicated desk and private offices suitable for 2-50 people. With support for your business at any stage, this centre will nurture and provide the services required to ensure the smooth running of your business. Stylish and sleek centre sure to leave lasting impressions on any visitors and guests. State-of-the-art facilities make your daily work life a breeze with an abundance of great services available. A collaborative environment to get you engaged with your team.

### transport links

Underground	N/A
Train Station	Flinders Street Station
Road Link	N/A
Airport	Melbourne Helipad

### Coworking Spaces

- **Price** : \$410 pcm
- **Min Price** : \$410 pcm
- **Total Size** : 45 wkstns
- **Min Term** : 1 mnths
- **Max Term** : 24 mnths